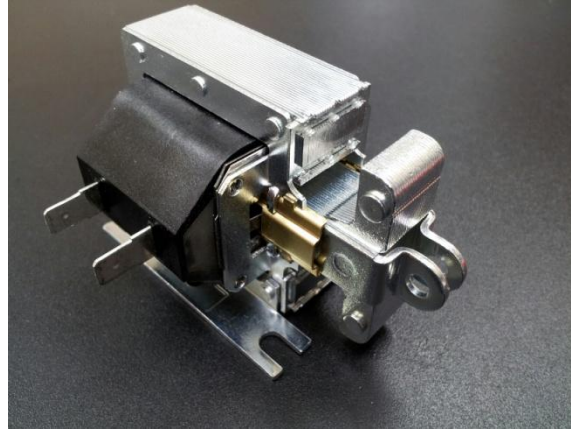


AMERICAN DISH SERVICE

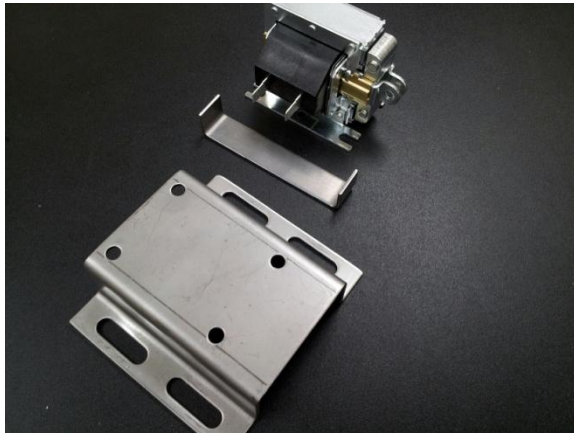
TECHNICAL SUPPORT MATERIAL

Routine and Preventative Maintenance

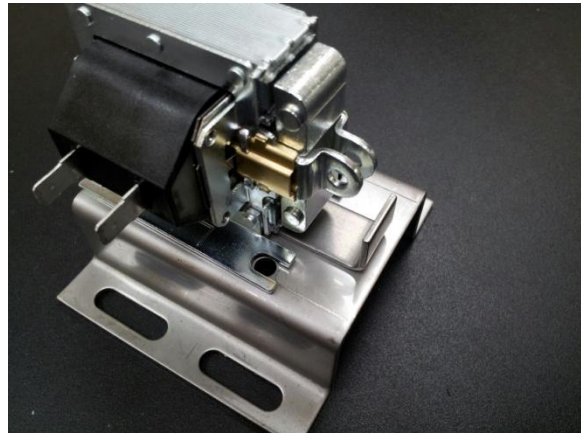
Replacement of drain solenoid



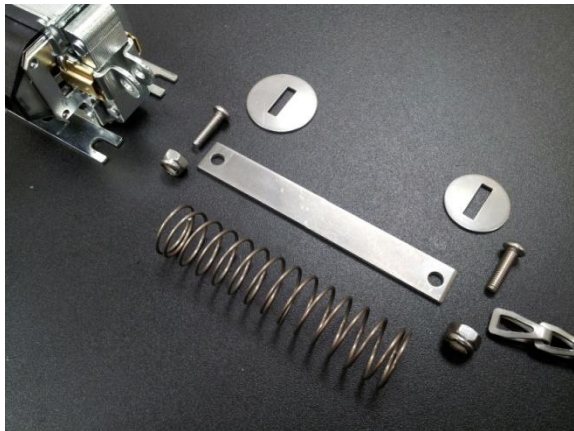
120v drain solenoid 091-2001 on AFB, AF-3D-S, AFES, 5AG-S, 5AGES, ET (gravity), or L90-3DWS



Showing Solenoid base 086-6622 and Stop 086-6604



Solenoid placed in correct position, NOTE inside stop



Correct order of washers and link 086-6605



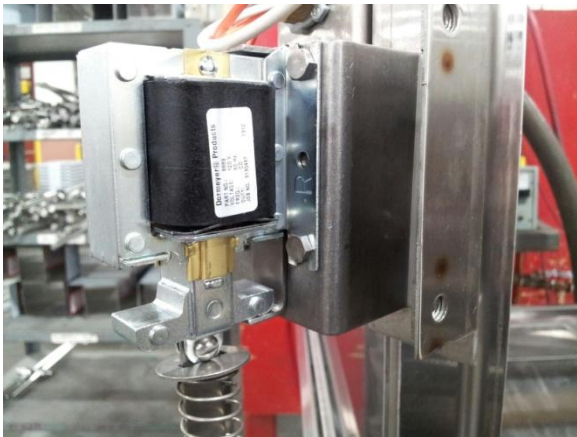
Large washer 086-6607 on top, small 086-6606 bottom



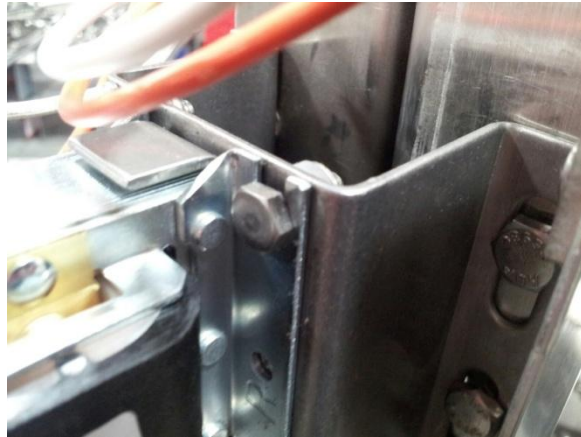
Large washer goes on outside of solenoid cover



Plastic tube keeps chain from kinking or snapping up



Shown mounted on AF-3DS or AFES



Solenoid is fixed and secured to Base



Base is adjusted up or down for correct chain length



Drain ball should tip from center no more than 1"



Inspect drain ball for grooves or lumps that cause leaks



Reverse or replace the drain ball to stop leaking

Common failures:

If solenoid is buzzing when engaged—replace solenoid

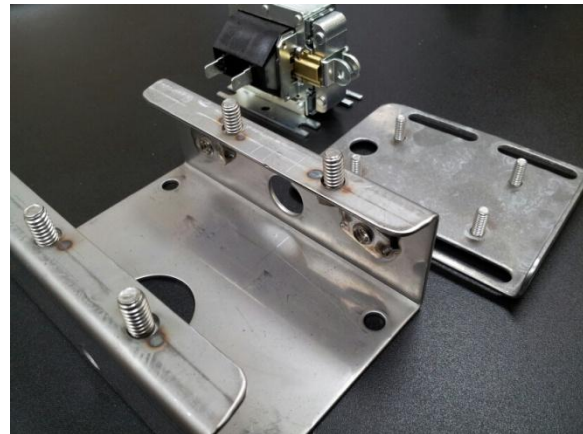
If solenoid stays engaged after power has ceased, residual magnetism—replace solenoid

If solenoid has voltage at terminals but will not engage—replace solenoid

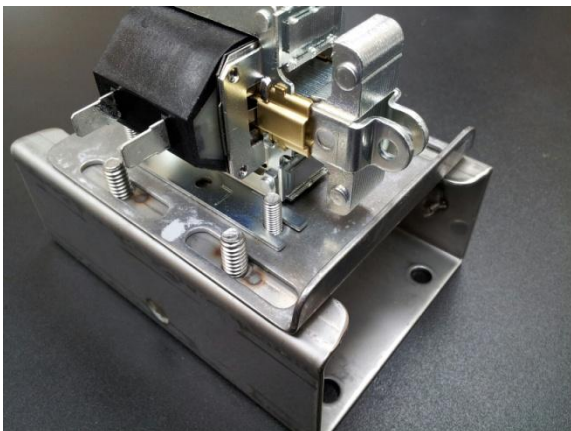
Drain solenoid 091-2001 as installed on 5AG-S, 5AGES, 5CD, AFB



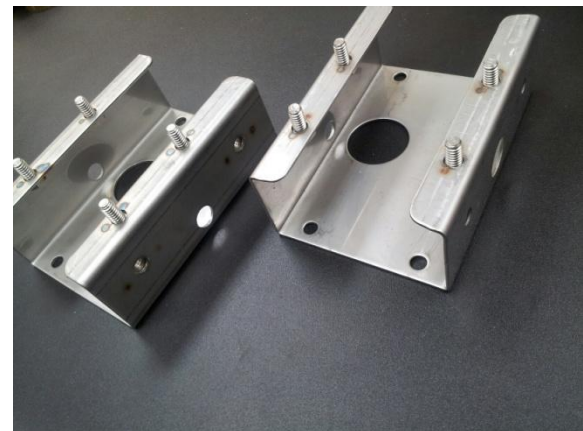
Solenoid cover on 5AG-S, dual solenoids



Solenoid base 085-6620, base plate 085-6622

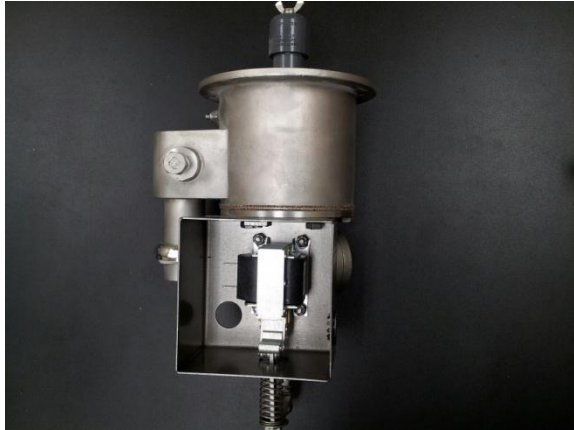


Solenoid is fixed to base plate, plate adjusts up or down

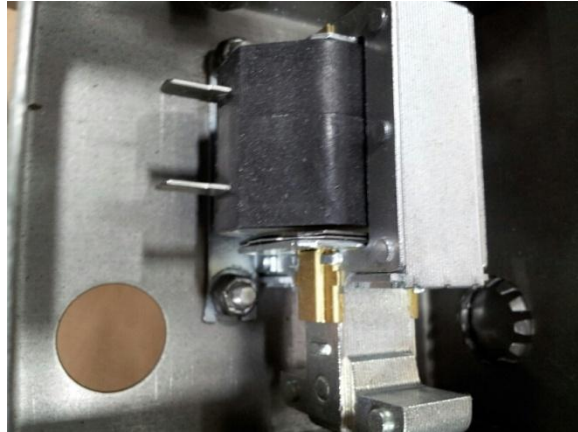


5AGS left base 085-6620, right base 085-6621-big hole

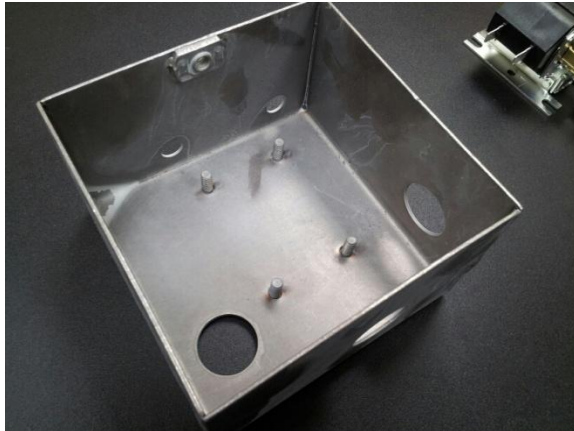
Drain solenoid 091-2001 as installed on ET-AF (Gravity), L-3DW-S



ET-AF (gravity) and L3DWS drain solenoid & sump



Solenoid attaches to studs



Solenoid box 085-6613 has fixed studs



Pushrod 086-6307 and drain tube 084-6610



Note rubber washer under cap needed to seal



Link 085-6610 secured to pushrod, no packing in tube